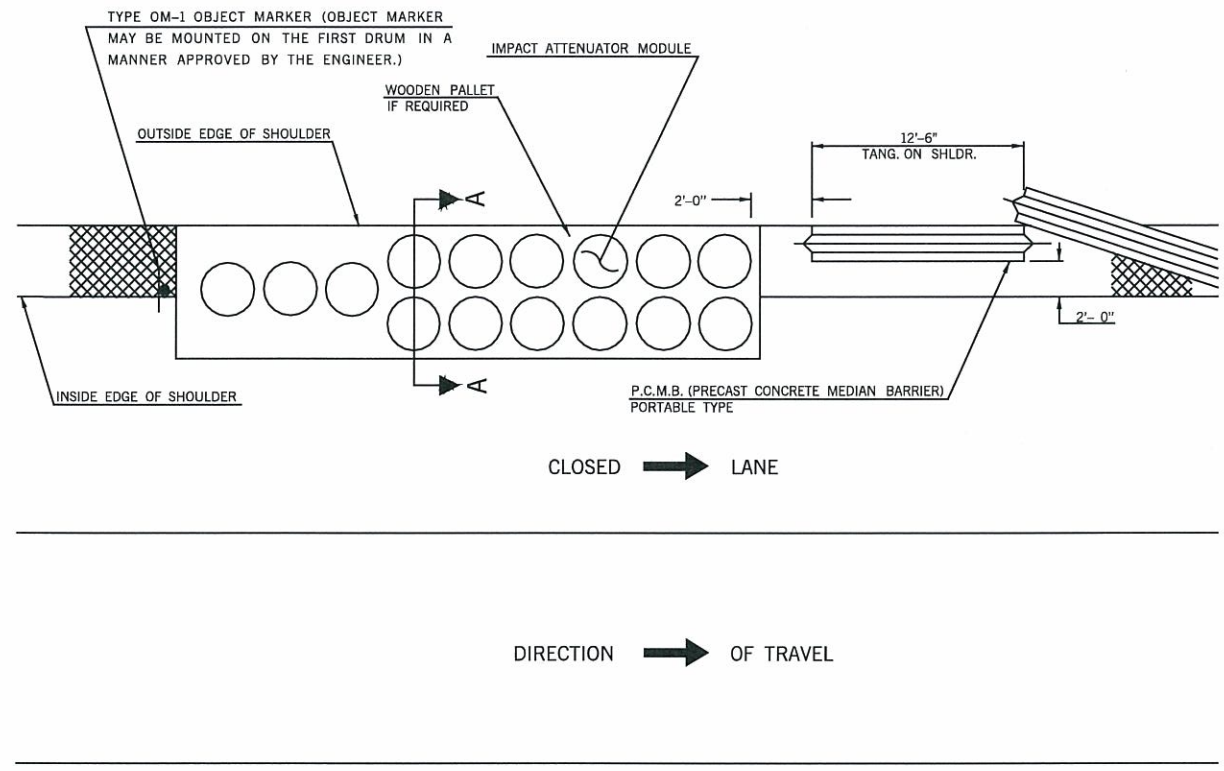
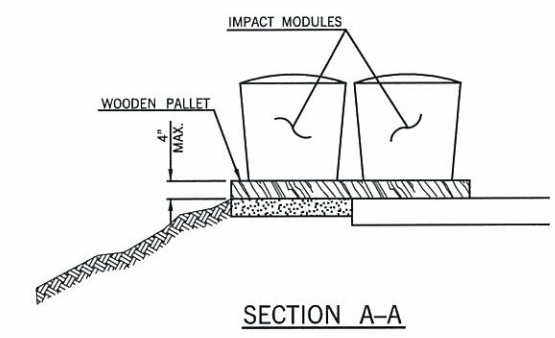


DESCRIPTION	REVISIONS	DATE
-------------	-----------	------



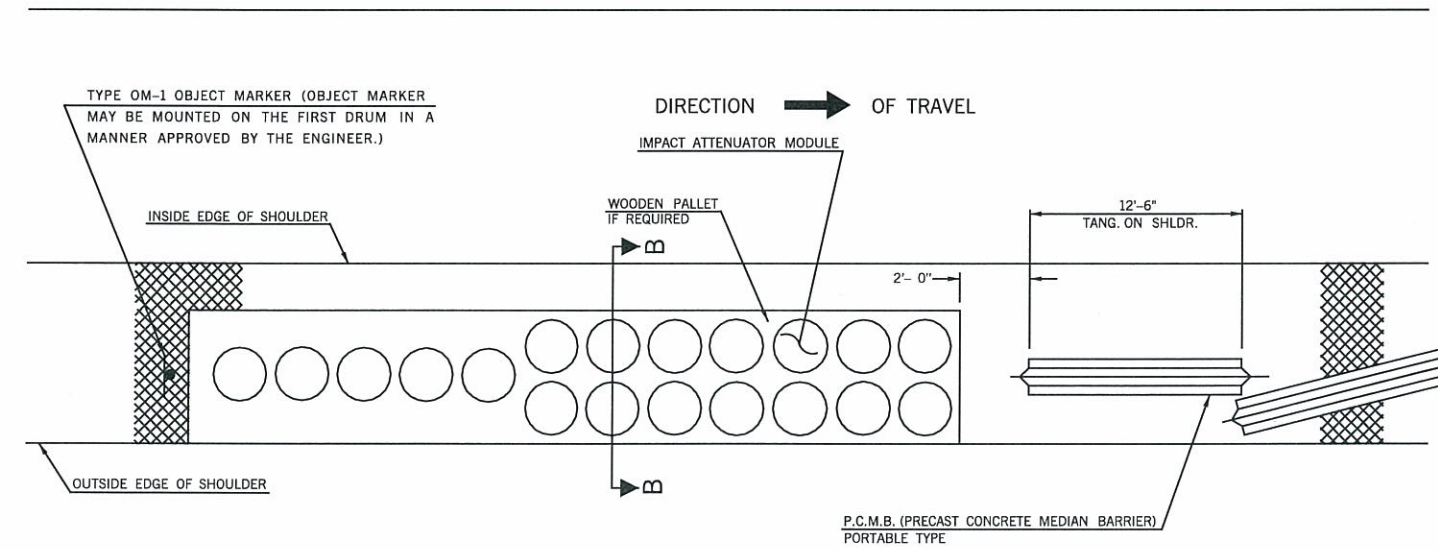
**ATTENUATOR PLACEMENT INSIDE SHOULDER**  
(THE 15 MODULE CONFIGURATION SHOWN)



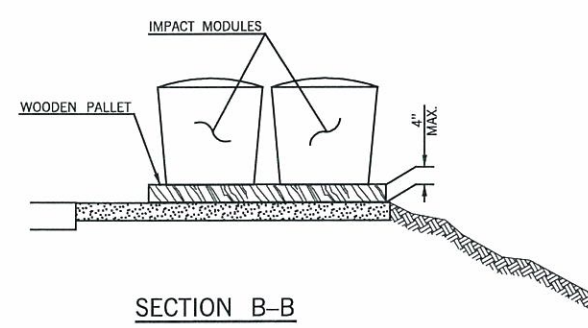
**SECTION A-A**

NOTES:  
THE CONTRACTOR, AT HIS OPTION, MAY INSTALL THE IMPACT ATTENUATOR ON WOODEN PALLETS TO PROVIDE PORTABILITY SINCE RELOCATION WILL BE NECESSARY.

MODULE CONFIGURATION AND NUMBER OF MODULES ARE AS FOLLOWS:  
(1) FOR DESIGN SPEEDS 60 MPH AND LESS USE 15 MODULES.  
(2) FOR DESIGN SPEEDS GREATER THAN 60 MPH USE 19 MODULES.



**ATTENUATOR PLACEMENT OUTSIDE SHOULDER**  
(THE 19 MODULE CONFIGURATION SHOWN)

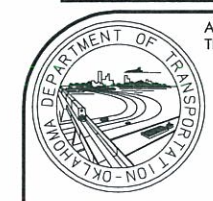


**SECTION B-B**

NOTES:  
THE CONTRACTOR, AT HIS OPTION, MAY INSTALL THE IMPACT ATTENUATOR ON WOODEN PALLETS TO PROVIDE PORTABILITY SINCE RELOCATION WILL BE NECESSARY.

MODULE CONFIGURATION AND NUMBER OF MODULES ARE AS FOLLOWS:  
(1) FOR DESIGN SPEEDS 60 MPH AND LESS USE 15 MODULES.  
(2) FOR DESIGN SPEEDS GREATER THAN 60 MPH USE 19 MODULES.

BASIS OF PAYMENT		
ITEM NO.	ITEM	UNIT
870(A)	SAND FILLED IMPACT ATTEN. MODULE	SD



APPROVED BY TRAFFIC ENGINEER: *Charles Smith* DATE: 6/23/10

TRAFFIC STANDARD  
TRAFFIC CONTROL STANDARD  
PLACEMENT OF SAND FILLED IMPACT ATTENUATOR FOR CONSTRUCTION ZONES

2009 SPECIFICATIONS

TCS23-1	00
---------	----

T-523

TRFPC36 D:\usr2\2009\_Standards\_TC\1523.dgn 3:28:42 PM 6/22/2010 R:\TRAF\_PLOT\lroyh.pen R:\TRAF\_PLOT\bw.tbl